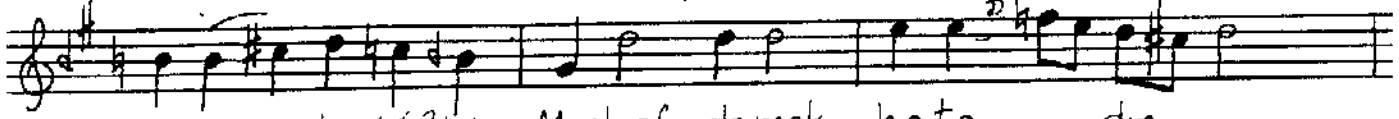
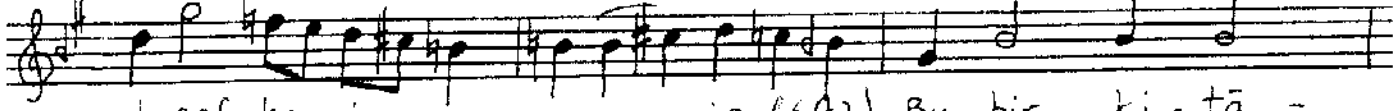


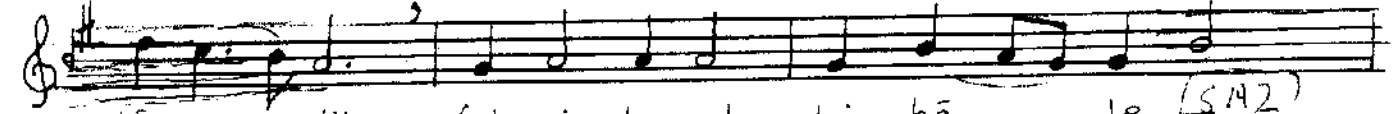
Mushaf demek hata - dir - ol saf - ha - i -
Hayra - nı mah - ı rû - yân - hurşî - de mi -



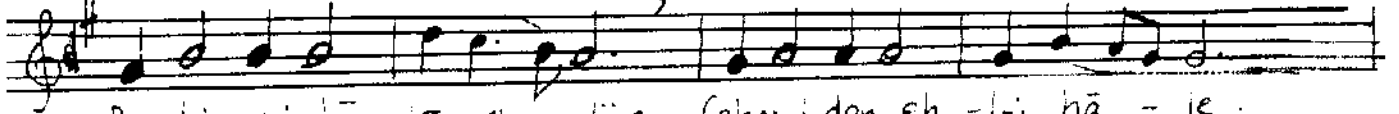
ce ma - le (SAZ) Mushaf demek hata - dir -
hir sal - maz, - Hayra nı mah - ı rû - yân -



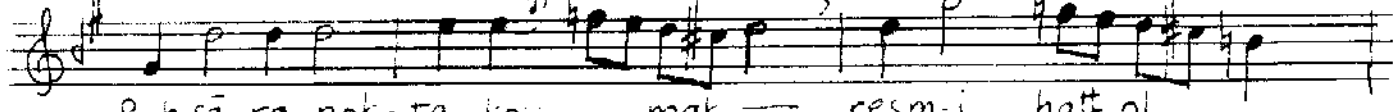
ol saf - ha - i - ce ma - le (SAZ) Bu bir ki - tā -
hurşî de mi - hir sal - maz, - Müş tā - k - i - tā -



- bî söz - dür, fehm i - den eh - l-i hā - le (SAZ)
- ki eb - rân, ek sik ba kar hi - lâ - ie -



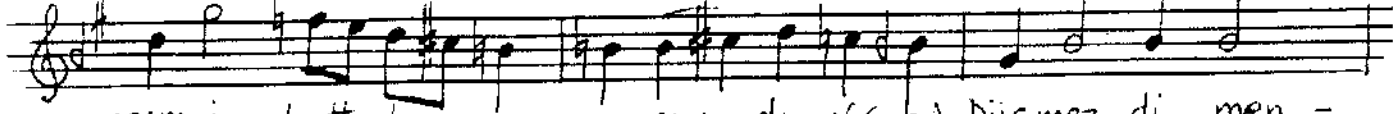
Bu bir ki - tā - bî söz - dür, fehm i den eh - l-i hā - ie.
Müş tā ki tā - k - i eb - rân, ek sik ba kar hi - lâ - ie.



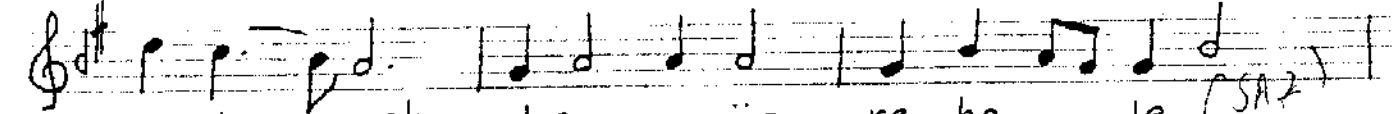
Ruhsā re nok - ta koy - mak - resm-i hatt ol -
Resmi ve fā Fu zû - li - sen den ke mâ -



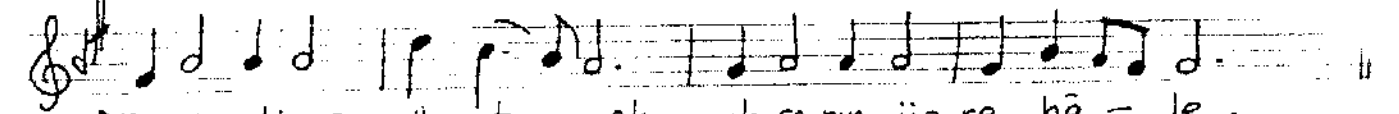
- ma - say - dı (SAZ) Ruhsa re nok ta koy - mak -
ie er - miş, - Resmi ve fā Fu zû - li -



resm-i hatt ol - ma say - dı (SAZ) Düşmez di men -
senden ke mâ - ie er - miş - Hoş kâ mil - i



- zil et - mek ruhsa - rın üz - re ha - le (SAZ)
ze - man - sîn ah sen tü bu ke ma - le



Düşmez di men - zil et - mek ruhsa rın üz re hā - le.
Hoş kâ mil - i ze - man - sîn ah sen tü bu ke mâ - le.